

# OUTDOOR INVESTMENT CO.

*We understand the land.*



**Contact:** Chas Pell

**Office:** 205.802.5535

**Cell:** 205.919.6504

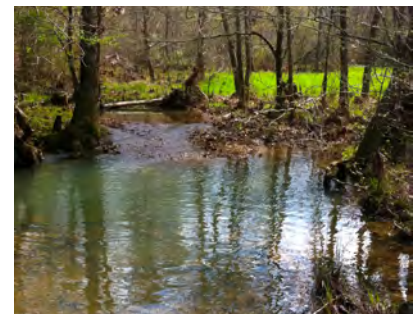
**email:** chas@outdoorinvestment.com



## PINE VALLEY PLANTATION

### Chilton County

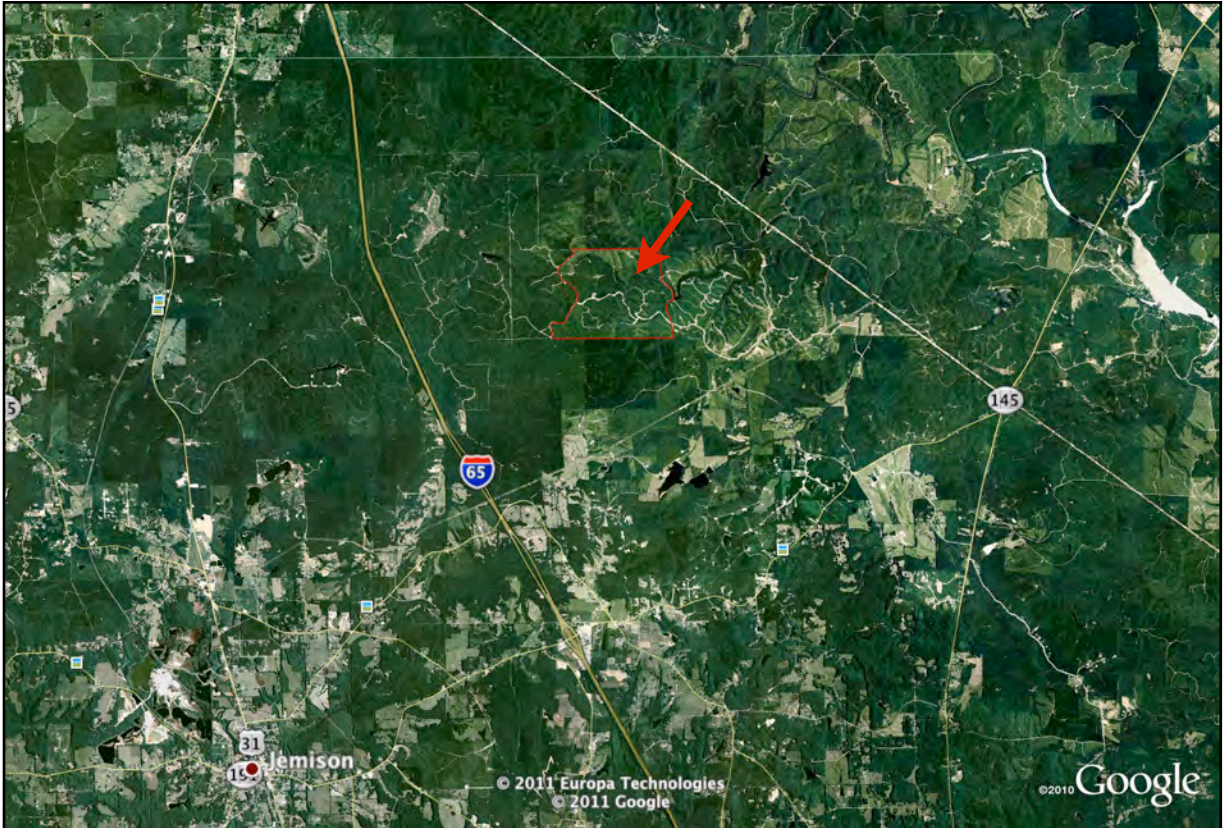
- ▶ *636 Acre Prime Recreational Property*
- ▶ *One Hour From Birmingham - Near Jemison - Minutes from I-65*
- ▶ *Access to 70 acre privately owned lake*
- ▶ *Beautiful Ridge Views*
- ▶ *Excellent Deer and Turkey Hunting*
- ▶ *Adjacent to 1,700 acre Planned Recreational Community*



**\$990,000**

**\$1,556 per acre**

*See Reverse for Aerial and Location*



**Boundaries Are Approximate**